

— CREATES MOBILE WORKPLACES —



FIAT

Doblò, Talento & Ducato



SYSTEM 
EDSTRÖM

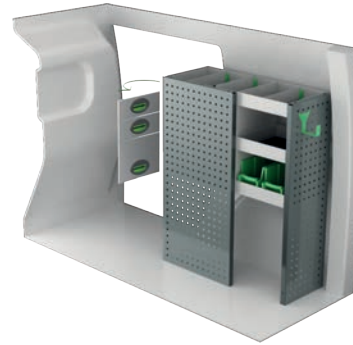
FIAT DOBLÒ

For price information, mounting time and content in our van racking packages, scan the QR code on the first page.

On electric and hybrid vans we recommend mounting by an experienced installer. Batteries and cable harnesses for approximately 400 volt must be taken in consideration. Cost of a floor may be added.



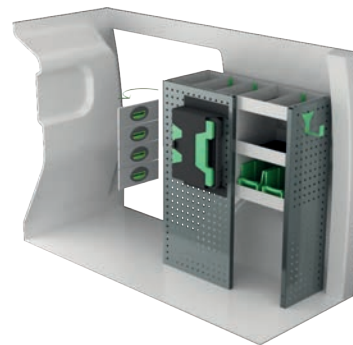
Art.No	LxDxH	Kg
F40600	1241x300x1000 mm	22



Art.No	LxDxH	Kg
F40601	805x300x1000 mm	33



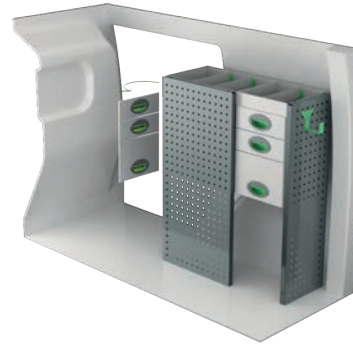
Art.No	LxDxH	Kg
F40602	1241x300x1000 mm	35



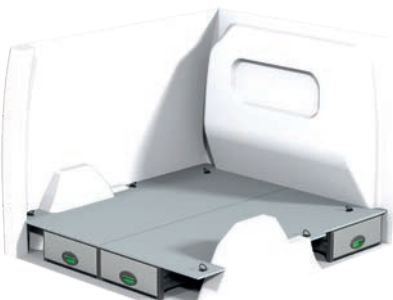
Art.No	LxDxH	Kg
F40603	805x300x1000 mm	39



Art.No	LxDxH	Kg
F40604	1241x300x1000 mm	34



Art.No	LxDxH	Kg
F40605	805x300x1000 mm	42



Art.No	Height	Kg
F40614	190	68



Art.No	Height	Kg
F40615	250	71



Art.No	Height	Kg
F40616	360	81

FIAT DOBLÒ MAXI

For price information, mounting time and content in our van racking packages, scan the QR code on the first page.

On electric and hybrid vans we recommend mounting by an experienced installer. Batteries and cable harnesses for approximately 400 volt must be taken in consideration. Cost of a floor may be added.



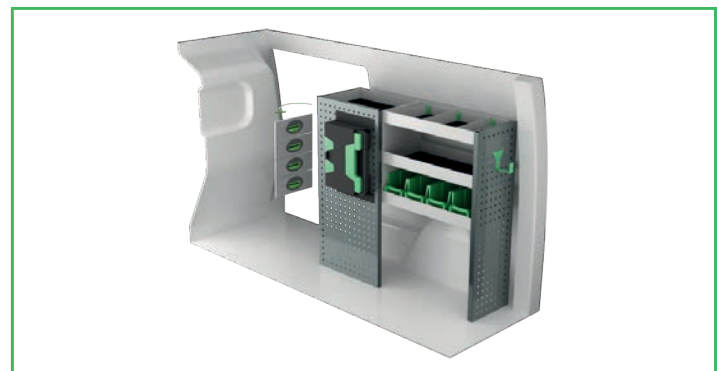
Art.No	LxDxH	Kg
F40620	1633x300x1000 mm	26



Art.No	LxDxH	Kg
F40621	1108x300x1000 mm	37



Art.No	LxDxH	Kg
F40622	1633x300x1000 mm	40



Art.No	LxDxH	Kg
F40623	1108x300x1000 mm	43



Art.No	LxDxH	Kg
F40624	1601x300x1000 mm	57



Art.No	LxDxH	Kg
F40625	1117x300x1000 mm	43



Art.No	Height	Kg
F40634	190	75



Art.No	Height	Kg
F40635	250	87



Art.No	Height	Kg
F40636	360	95

FIAT SCUDO L1H1

For price information, mounting time and content in our van racking packages, scan the QR code on the first page.

On electric and hybrid vans we recommend mounting by an experienced installer. Batteries and cable harnesses for approximately 400 volt must be taken in consideration. Cost of a floor may be added.



Art.No	LxDxH	Kg
F42100	1452x300x1000 mm	27



Art.No	LxDxH	Kg
F42101	758x300x1000 mm	19



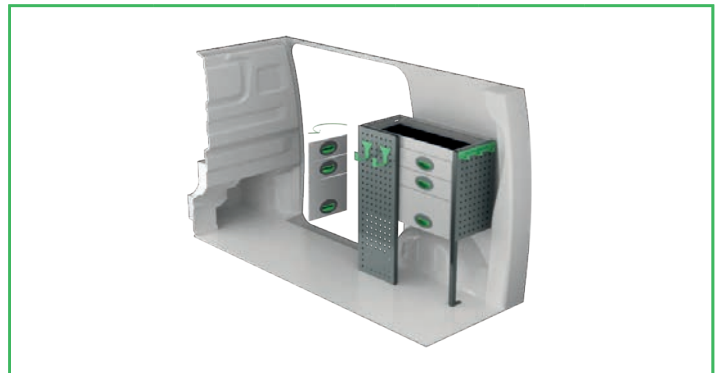
Art.No	LxDxH	Kg
F42102	1452x300x890 mm	37



Art.No	LxDxH	Kg
F42103	726x300x890 mm	27



Art.No	LxDxH	Kg
F42104	1452x300x1000 mm	44



Art.No	LxDxH	Kg
F42105	726x300x890 mm	36



Art.No	Height	Kg
F42110	190	81



Art.No	Height	Kg
F42111	250	87

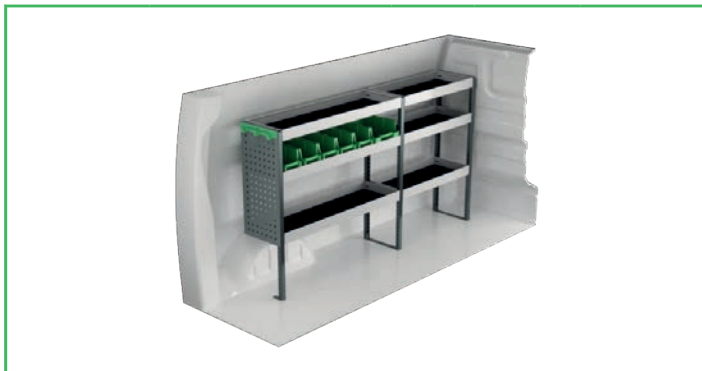


Art.No	Height	Kg
F42112	360	106

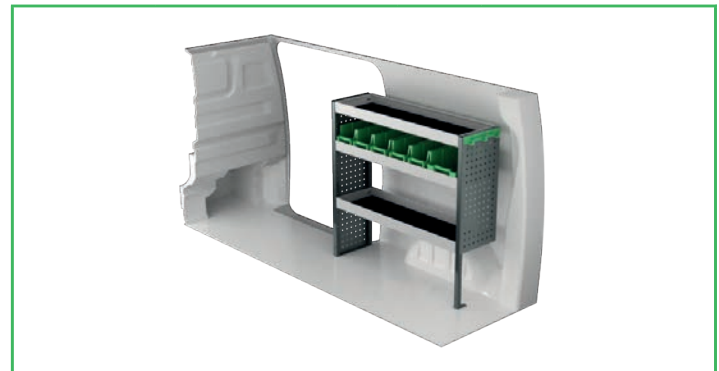
FIAT SCUDO L2H1

For price information, mounting time and content in our van racking packages, scan the QR code on the first page.

On electric and hybrid vans we recommend mounting by an experienced installer. Batteries and cable harnesses for approximately 400 volt must be taken in consideration. Cost of a floor may be added.



Art.No	LxDxH	Kg
F42120	1785x300x1000 mm	33



Art.No	LxDxH	Kg
F42121	1061x300x1000 mm	24



Art.No	LxDxH	Kg
F42122	1785x300x890 mm	42



Art.No	LxDxH	Kg
F42123	1107x300x890 mm	35



Art.No	LxDxH	Kg
F42124	1785x300x1000 mm	52



Art.No	LxDxH	Kg
F42125	1107x300x890 mm	46



Art.No	Height	Kg
F42130	190	87



Art.No	Height	Kg
F42131	250	94

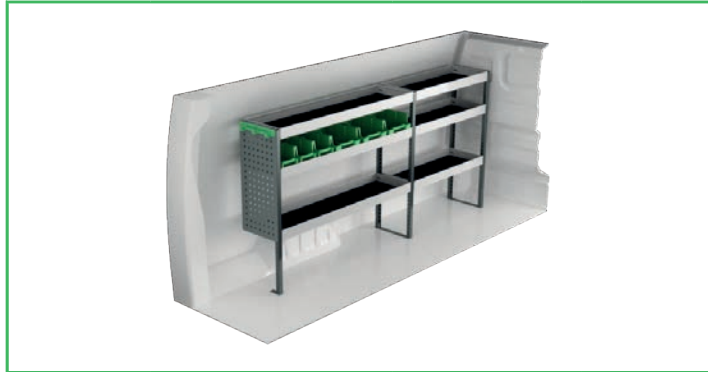


Art.No	Height	Kg
F42132	360	128

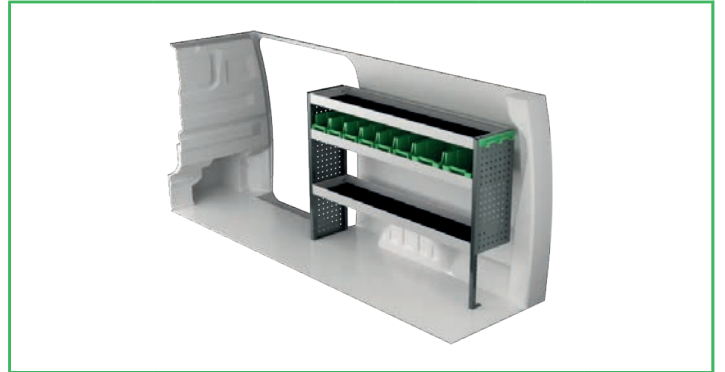
FIAT SCUDO L3H1

For price information, mounting time and content in our van racking packages, scan the QR code on the first page.

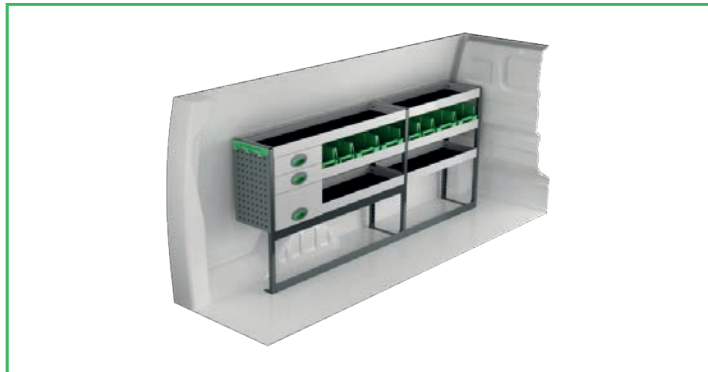
On electric and hybrid vans we recommend mounting by an experienced installer. Batteries and cable harnesses for approximately 400 volt must be taken in consideration. Cost of a floor may be added.



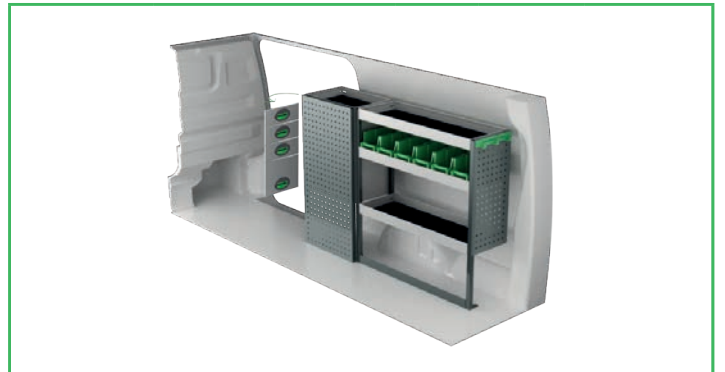
Art.No	LxDxH	Kg
F42140	2054x300x1000 mm	35



Art.No	LxDxH	Kg
F42141	1453x300x1000 mm	29



Art.No	LxDxH	Kg
F42142	2054x300x890 mm	46



Art.No	LxDxH	Kg
F42143	1440x300x1000 mm	50



Art.No	LxDxH	Kg
F42144	2054x300x1000 mm	55



Art.No	LxDxH	Kg
F42145	1440x300x890 mm	61



Art.No	Height	Kg
F42150	190	91



Art.No	Height	Kg
F42151	250	96

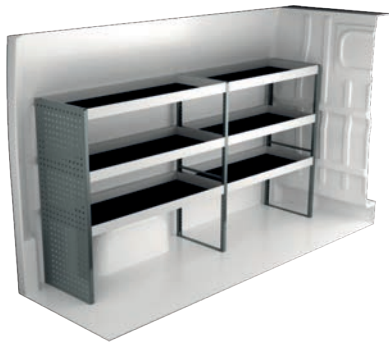


Art.No	Height	Kg
F42152	360	130

FIAT DUCATO L1H1

For price information, mounting time and content in our van racking packages, scan the QR code on the first page.

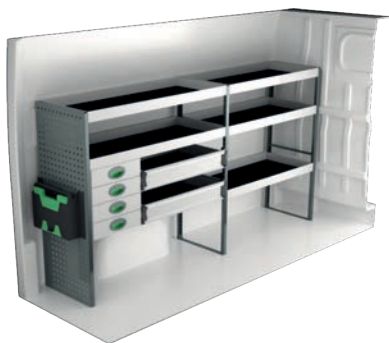
On electric and hybrid vans we recommend mounting by an experienced installer. Batteries and cable harnesses for approximately 400 volt must be taken in consideration. Cost of a floor may be added.



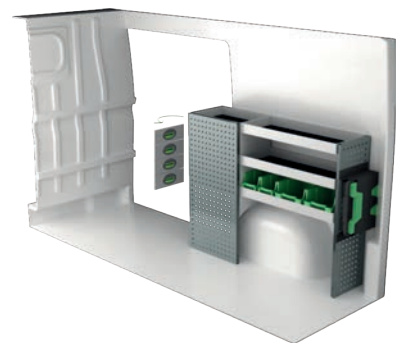
Art.No	LxDxH	Kg
F45020	2270x470x1220 mm	53



Art.No	LxDxH	Kg
F45021	1287x300x1000 mm	38



Art.No	LxDxH	Kg
F45022	2355x470x1220 mm	83



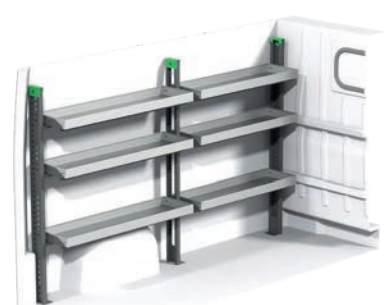
Art.No	LxDxH	Kg
F45023	1372x300x1000 mm	44



Art.No	LxDxH	Kg
F45024	2270x300x1515 mm	89



Art.No	LxDxH	Kg
F45025	1287x300x1000 mm	52



Art.No	LxDxH	Kg
F45026	2275x503x1605 mm	67

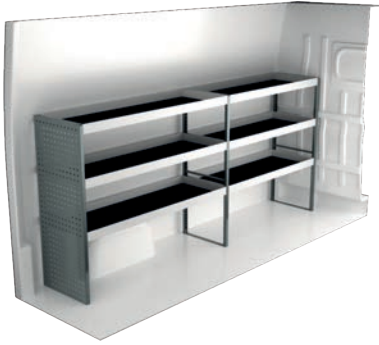


Art.No	LxDxH	Kg
F45027	1252x503x1605 mm	39

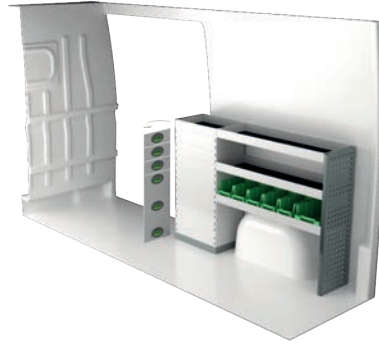
FIAT DUCATO L2H2

For price information, mounting time and content in our van racking packages, scan the QR code on the first page.

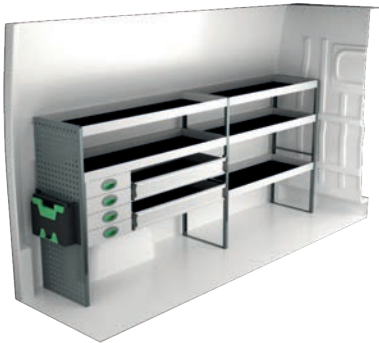
On electric and hybrid vans we recommend mounting by an experienced installer. Batteries and cable harnesses for approximately 400 volt must be taken in consideration. Cost of a floor may be added.



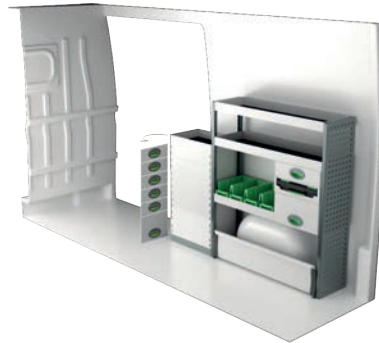
Art.No	LxDxH	Kg
F45040	2662x470x1220 mm	59



Art.No	LxDxH	Kg
F45041	1500x300x1000 mm	55



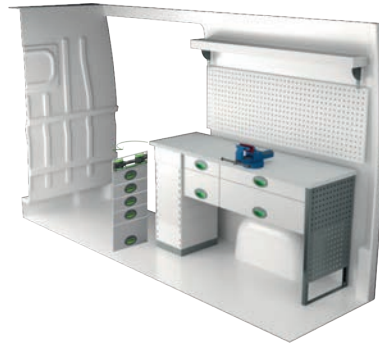
Art.No	LxDxH	Kg
F45042	2747x470x1220 mm	90



Art.No	LxDxH	Kg
F45043	1532x300x1220 mm	70



Art.No	LxDxH	Kg
F45044	2662x300x1735 mm	110



Art.No	LxDxH	Kg
F45045	1509x470x855 mm	103



Art.No	LxDxH	Kg
F45046	2667x503x1770 mm	83

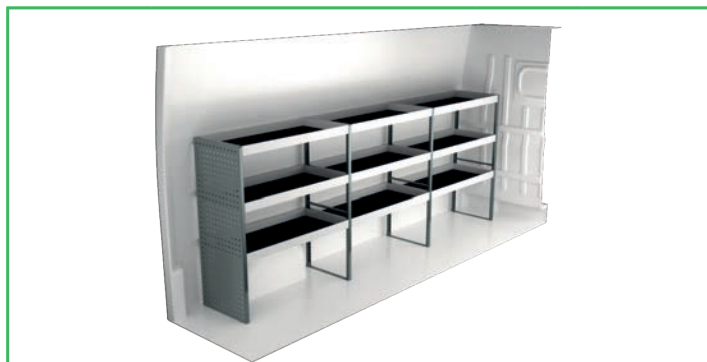


Art.No	LxDxH	Kg
F45047	1465x503x1770 mm	48

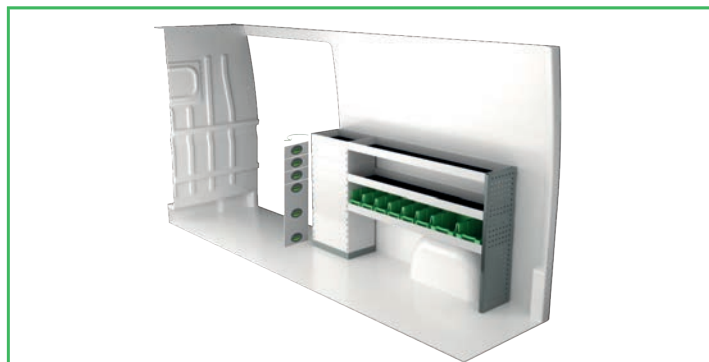
FIAT DUCATO L3H2

For price information, mounting time and content in our van racking packages, scan the QR code on the first page.

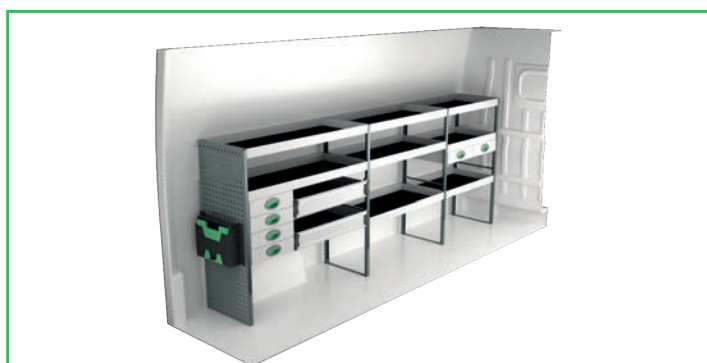
On electric and hybrid vans we recommend mounting by an experienced installer. Batteries and cable harnesses for approximately 400 volt must be taken in consideration. Cost of a floor may be added.



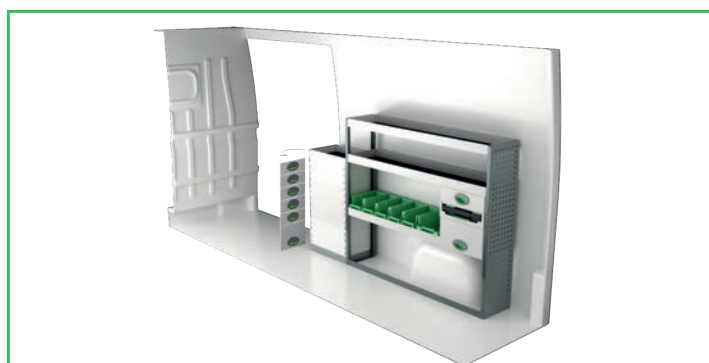
Art.No	LxDxH	Kg
F45060	3120x470x1220 mm	72



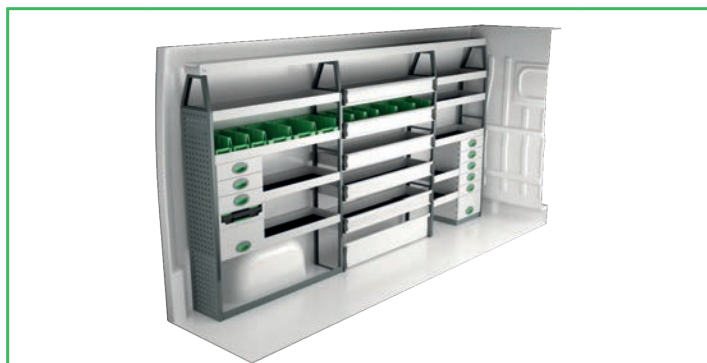
Art.No	LxDxH	Kg
F45061	1892x300x1000 mm	60



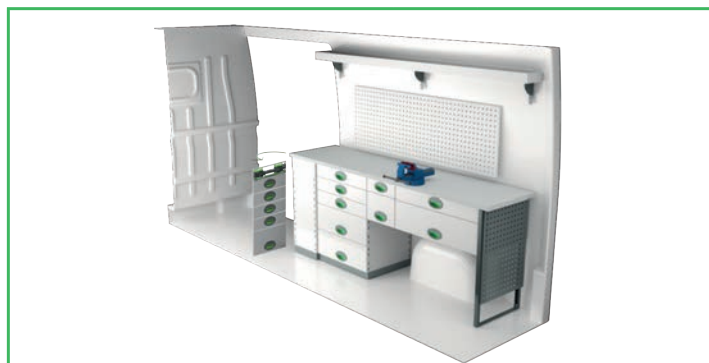
Art.No	LxDxH	Kg
F45062	3086x470x1220 mm	112



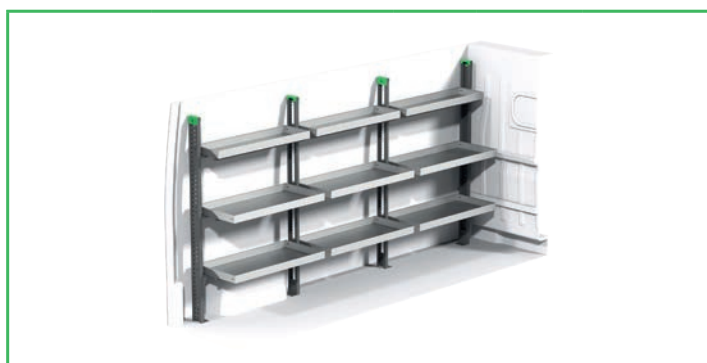
Art.No	LxDxH	Kg
F45063	1924x300x1220 mm	75



Art.No	LxDxH	Kg
F45064	3265x300x1735 mm	147



Art.No	LxDxH	Kg
F45065	2024x470x855 mm	145



Art.No	LxDxH	Kg
F45066	3298x503x1770 mm	104

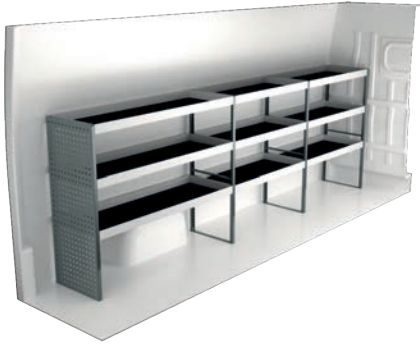


Art.No	LxDxH	Kg
F45067	1883x503x1770 mm	67

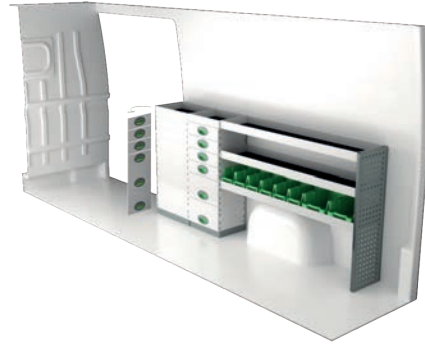
FIAT DUCATO L4H2

For price information, mounting time and content in our van racking packages, scan the QR code on the first page.

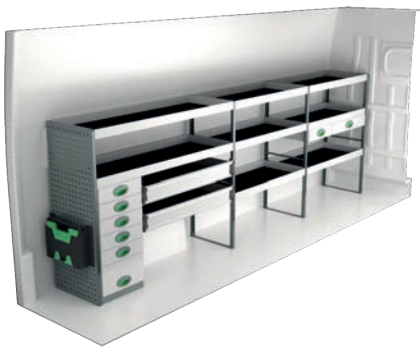
On electric and hybrid vans we recommend mounting by an experienced installer. Batteries and cable harnesses for approximately 400 volt must be taken in consideration. Cost of a floor may be added.



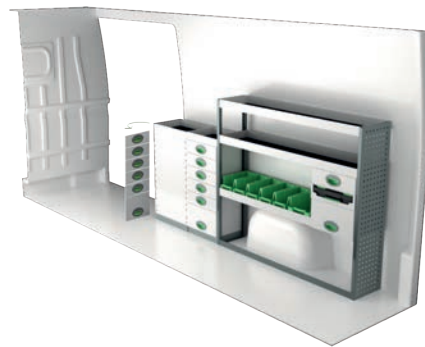
Art.No	LxDxH	Kg
F45080	3512x470x1220 mm	78



Art.No	LxDxH	Kg
F45081	2284x300x1000 mm	89



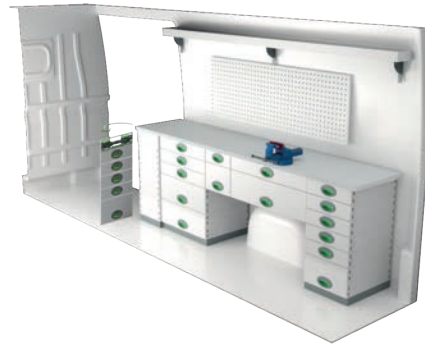
Art.No	LxDxH	Kg
F45082	3597x470x1220 mm	135



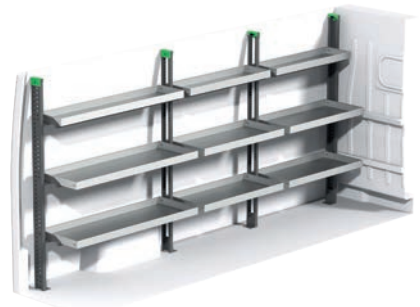
Art.No	LxDxH	Kg
F45083	2316x300x1220 mm	102



Art.No	LxDxH	Kg
F45084	3512x300x1735 mm	159



Art.No	LxDxH	Kg
F45085	2383x470x855 mm	190



Art.No	LxDxH	Kg
F45086	3511x503x1770 mm	112



Art.No	LxDxH	Kg
F45087	2488x503x1770 mm	75

INFORMATION



GENERALLY

The kits include what you see in the drawing as well as installation parts, rubber mats to all shelves and foam to the drawers. System Edström Billredningar AB is certified according to SS-EN ISO 9001:2015 to secure the administrative quality and to give us the possibility to keep a high accuracy on deliveries.

All material used in System Edström can be recycled to 100%. We are also certified according to SS-EN ISO 14001:2015.



REMEMBER

Now that you have chosen to have System Edström in your vehicle you have taken the first and most important step to make your mobile workshop safe and functional. From here on it is up to you how safe and functional your working place will be.

You as the driver has the full responsibility if you or any one else is injured if the cargo is poorly secured. It is also your responsibility to make sure that the interior is mounted in the safest way possible whatever your choice of workshop, even if they are professionals with knowhow and long experience.

Make sure NOT to exceed the maximum payload of the vehicle.



SECURITY

Our products are tested in two ways, the first and most important is two crashtests, one (ECE 17:07) performed by Milbrook in England and another one performed by Valutec in France (INRS NS286).

Learn more about us on our homepage, www.systemedstrom.com.

Pegboard tray

Depth	Width	Height	Kg	Part.No
82	200	80	0,5	4360
82	285	102	0,8	4362
122	455	122	1,5	4364
153	179	575	3,0	4370

A number of different trays that solve (almost) all storage problems.

Hooks

Depth	Width	Height	Kg	Part.No
31	295	40	0,3	2706
31	465	40	0,5	2708
85	80	100	0,2	4356
61	83	55	0,1	4357

Hose/Cable rack

Depth	Width	Height	Kg	Part.No
79	267	168	0,5	4077

Tube holder

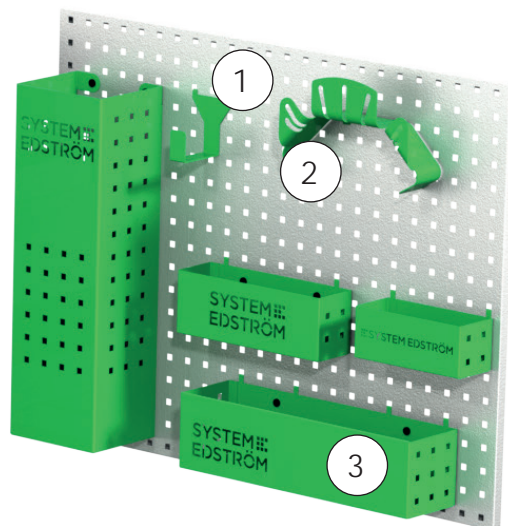
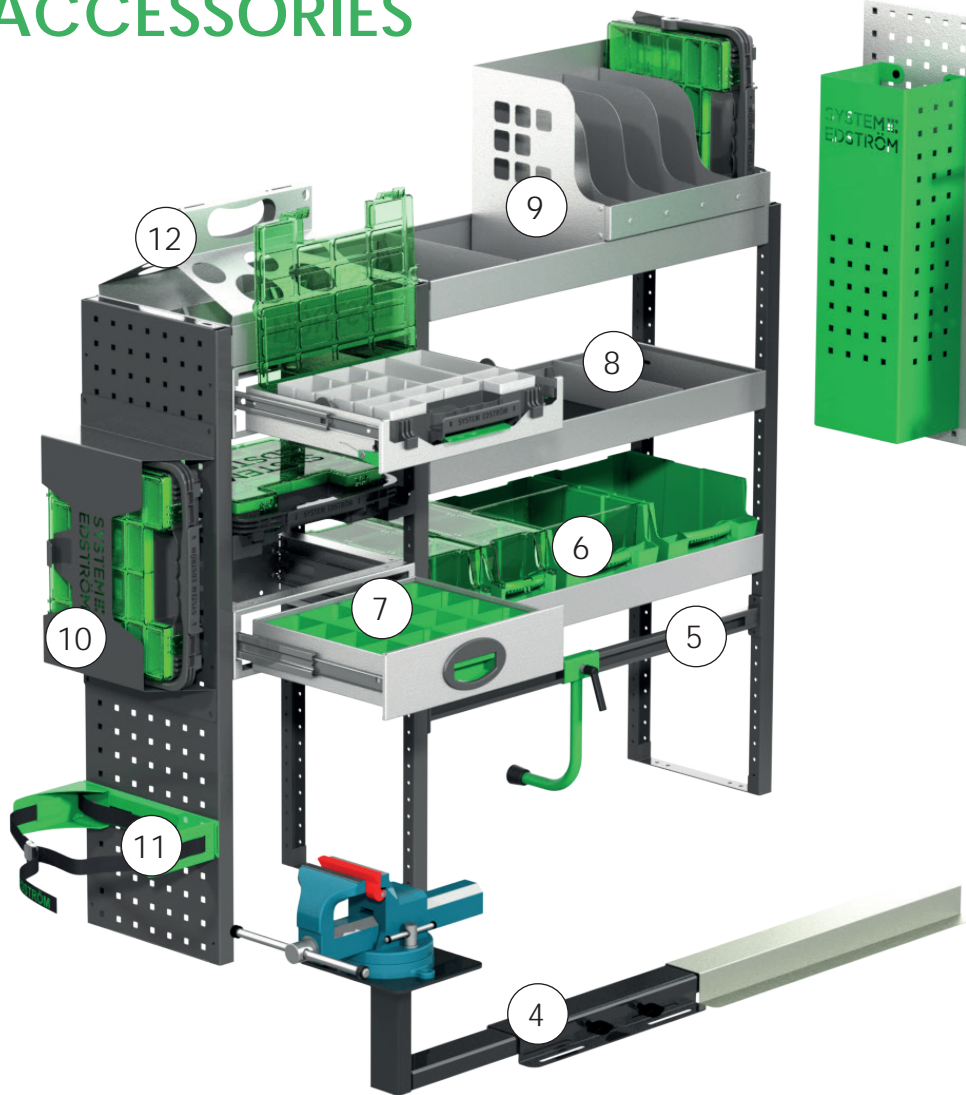
Depth	Width	Height	Kg	Part.No
66	194	123	0,4	4349

Internal ladder holder

Length	Kg	Part.No
2400	5,5	T8900

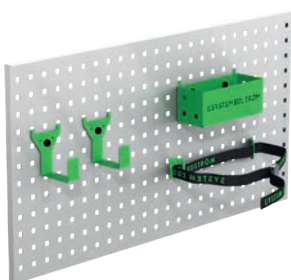
Store your ladder on the inside of the roof, pull it back to the rear door in a simple operation. The aluminum rail comes in two parts with a joining piece.

ACCESSORIES



Pos.	Description
1	Universal hook
2	Cable/Hose rack
3	Pegboard basket
4	Vice and holders
5	Case support
6	Plastic bins
7	Drawer inserts
8	Shelf dividers
9	Tool case/File holder
10	Tool case
11	Gas bottle holders
12	Can/Tube holder

Accessory package No. 1

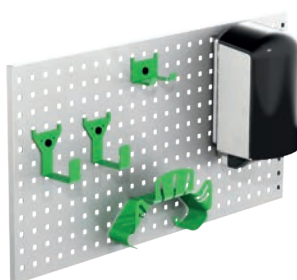


Art.No

F11001

Pegboard not included.

Accessory package No. 2

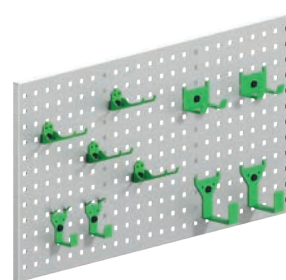


Art.No

F11002

Pegboard not included.

Accessory package No. 3



Art.No

F11004

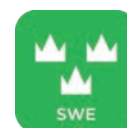
Pegboard not included.



Up to 5 years
warranty



Crash tested



Made in Sweden

www.systemedstrom.com

**SYSTEM
EDSTRÖM**

SYSTEM EDSTRÖM BILINREDNINGAR AB
Raseborgsgatan 11
164 74 Kista
Sweden

CONTACT

Order +46 (0)10 102 95 00
Sales +46 (0)10 102 95 01
Switchboard +46 (0)8 590 920 20
info@edstrom.se