

— CREATES MOBILE WORKPLACES —



VOLKSWAGEN

Caddy Cargo, ID. Buzz Cargo, Transporter T6, Crafter & Amarok



SYSTEM 
EDSTRÖM

VW CADDY CARGO

For price information, mounting time and content in our van racking packages, scan the QR code on the first page.

On electric and hybrid vans we recommend mounting by an experienced installer. Batteries and cable harnesses for approximately 400 volt must be taken in consideration. Cost of a floor may be added.



Art.No	LxDxH	Kg
F42200	1149x300x890 mm	24



Art.No	LxDxH	Kg
F42201	848x300x890 mm	17



Art.No	LxDxH	Kg
F42202	1149x300x1000 mm	38



Art.No	LxDxH	Kg
F42203	804x300x1000 mm	35



Art.No	LxDxH	Kg
F42204	1239x300x1075 mm	49



Art.No	LxDxH	Kg
F42205	804x300x1000 mm	43



Art.No	Height	Kg
F42210	190	66



Art.No	Height	Kg
F42211	250	71



Art.No	Height	Kg
F42212	360	79

VW CADDY CARGO MAXI

For price information, mounting time and content in our van racking packages, scan the QR code on the first page.

On electric and hybrid vans we recommend mounting by an experienced installer. Batteries and cable harnesses for approximately 400 volt must be taken in consideration. Cost of a floor may be added.



Art.No	LxDxH	Kg
F42220	1572x300x890 mm	28



Art.No	LxDxH	Kg
F42221	1061x300x890 mm	23



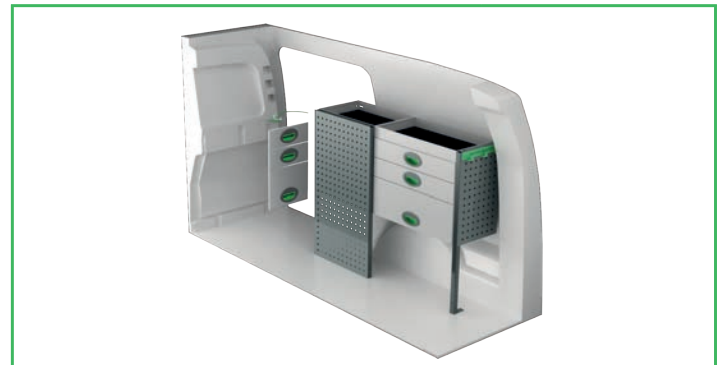
Art.No	LxDxH	Kg
F42222	1631x300x1000 mm	46



Art.No	LxDxH	Kg
F42223	1107x300x890 mm	35



Art.No	LxDxH	Kg
F42224	1631x300x1075 mm	57



Art.No	LxDxH	Kg
F42225	1107x300x890 mm	46



Art.No	Height	Kg
F42230	190	102



Art.No	Height	Kg
F42231	250	108

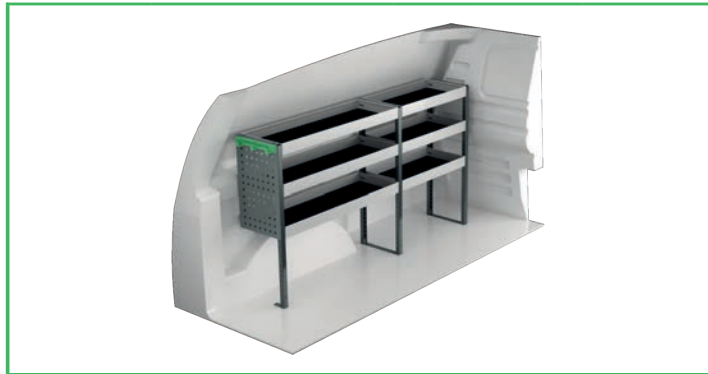


Art.No	Height	Kg
F42232	360	117

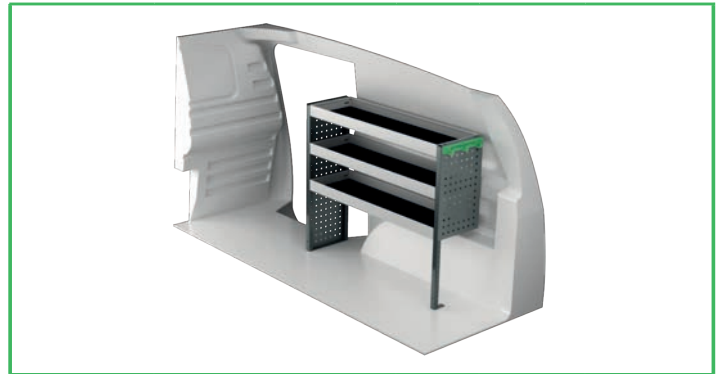
ID. BUZZ CARGO

For price information, mounting time and content in our van racking packages, scan the QR code on the first page.

On electric and hybrid vans we recommend mounting by an experienced installer. Batteries and cable harnesses for approximately 400 volt must be taken in consideration. Cost of a floor may be added.



Art.No	LxDxH	Kg
F42250	1606x300x890 mm	26



Art.No	LxDxH	Kg
F42251	1061x300x890 mm	20



Art.No	LxDxH	Kg
F42252	1631x300x890 mm	41



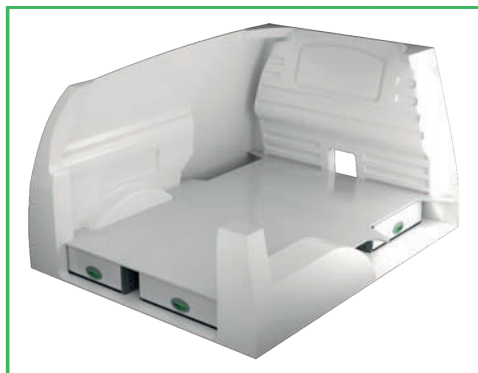
Art.No	LxDxH	Kg
F42253	1107x300x890 mm	35



Art.No	LxDxH	Kg
F42254	1606x300x890 mm	44



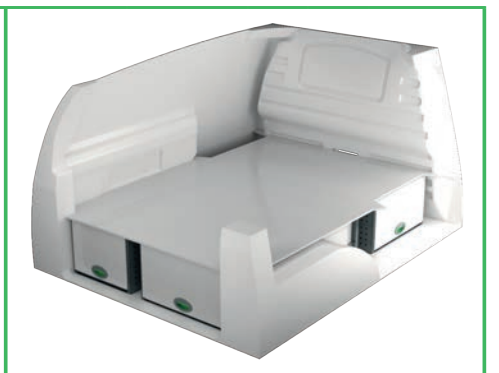
Art.No	LxDxH	Kg
F42255	1107x300x890 mm	46



Art.No	Height	Kg
F42260	190	76



Art.No	Height	Kg
F42261	250	75

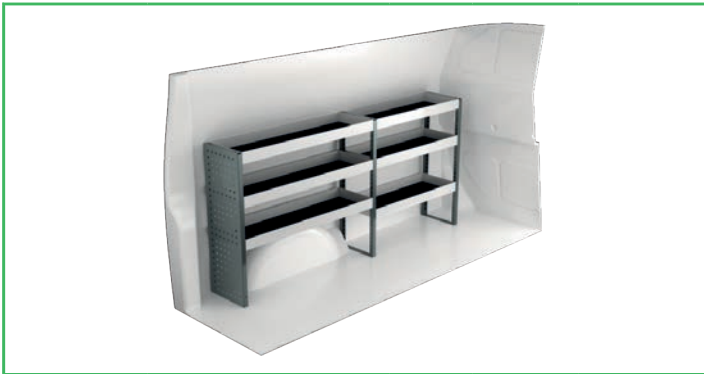


Art.No	Height	Kg
F42262	360	92

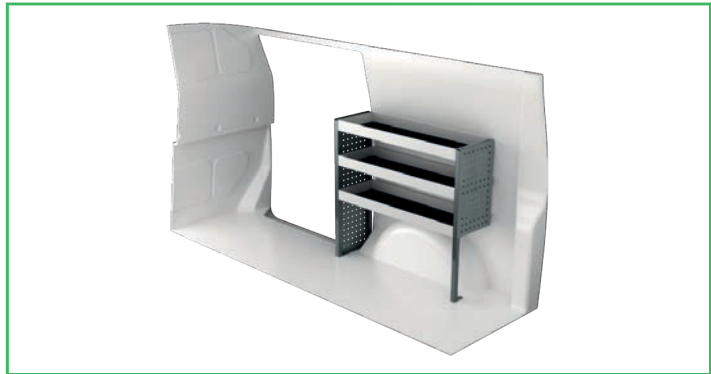
VW TRANSPORTER T6 3000 mm wheel base

For price information, mounting time and content in our van racking packages, scan the QR code on the first page.

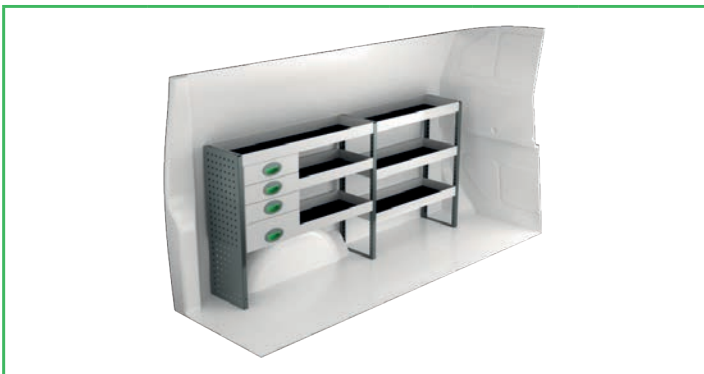
On electric and hybrid vans we recommend mounting by an experienced installer. Batteries and cable harnesses for approximately 400 volt must be taken in consideration. Cost of a floor may be added.



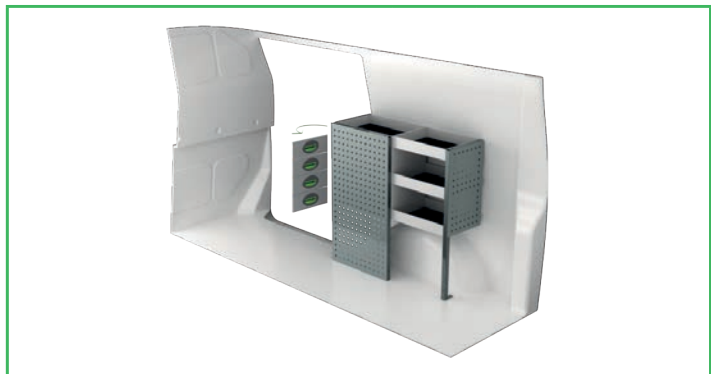
Art.No	LxDxH	Kg
F41640	1875x300x890 mm	29



Art.No	LxDxH	Kg
F41641	970x300x890 mm	19



Art.No	LxDxH	Kg
F41642	1875x300x890 mm	41



Art.No	LxDxH	Kg
F41643	894x300x890 mm	35



Art.No	LxDxH	Kg
F41644	1875x300x1185 mm	64



Art.No	LxDxH	Kg
F41645	848x300x890 mm	25



Art.No	Height	Kg
F41650	190	95



Art.No	Height	Kg
F41651	250	107

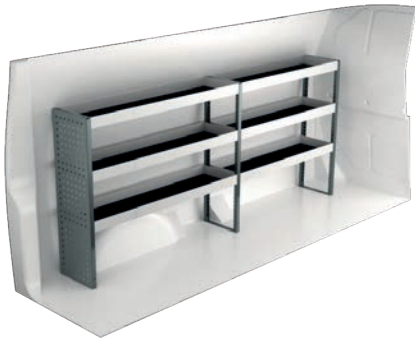


Art.No	Height	Kg
F41654	360	119

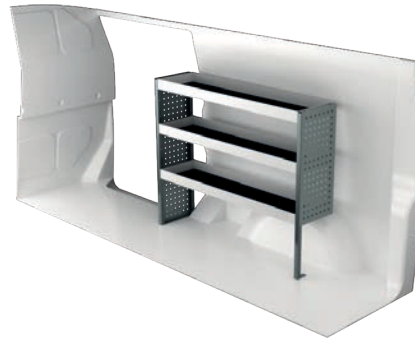
VW TRANSPORTER T6 3400 mm wheel base

For price information, mounting time and content in our van racking packages, scan the QR code on the first page.

On electric and hybrid vans we recommend mounting by an experienced installer. Batteries and cable harnesses for approximately 400 volt must be taken in consideration. Cost of a floor may be added.



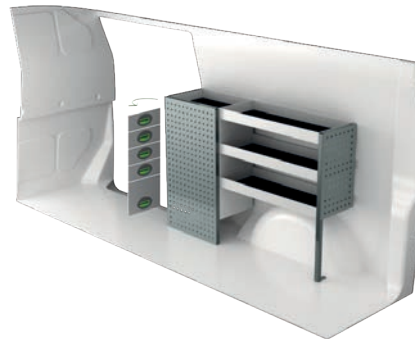
Art.No	LxDxH	Kg
F41660	2267x300x1000 mm	36



Art.No	LxDxH	Kg
F41661	1238x300x1000 mm	23



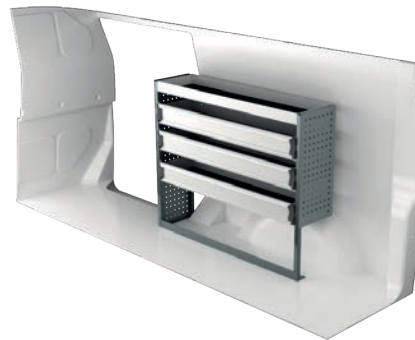
Art.No	LxDxH	Kg
F41662	2267x300x890 mm	44



Art.No	LxDxH	Kg
F41663	1286x300x890 mm	44



Art.No	LxDxH	Kg
F41664	2267x300x1185 mm	69



Art.No	LxDxH	Kg
F41665	1240x300x1000 mm	35



Art.No	Height	Kg
F41670	190	97



Art.No	Height	Kg
F41671	250	109

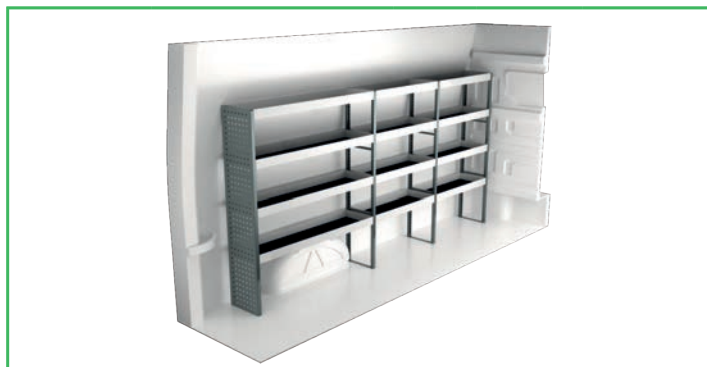


Art.No	Height	Kg
F41674	360	121

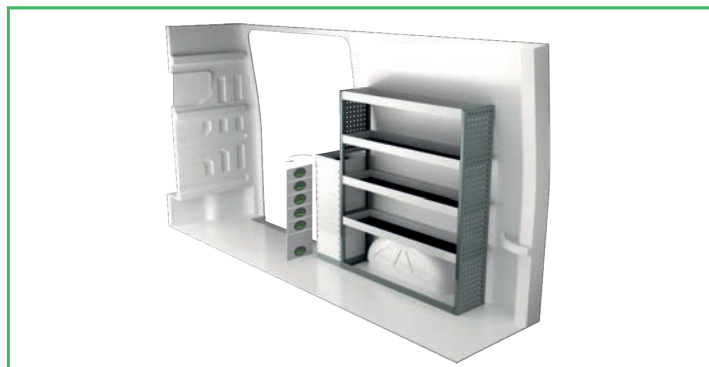
VW CRAFTER L3H3 3640 mm wheel base

For price information, mounting time and content in our van racking packages, scan the QR code on the first page.

On electric and hybrid vans we recommend mounting by an experienced installer. Batteries and cable harnesses for approximately 400 volt must be taken in consideration. Cost of a floor may be added.



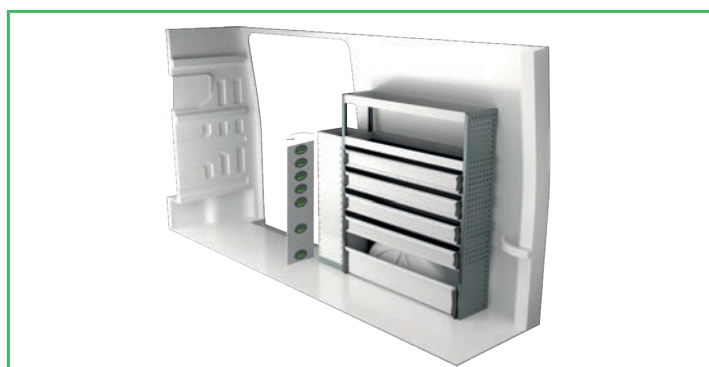
Art.No	LxDxH	Kg
F41900	2779x300x1440 mm	60



Art.No	LxDxH	Kg
F41901	1539x300x1440 mm	55



Art.No	LxDxH	Kg
F41902	2779x300x1440 mm	87



Art.No	LxDxH	Kg
F41903	1539x300x1440 mm	78



Art.No	LxDxH	Kg
F41904	2904x470x1440 mm	144



Art.No	LxDxH	Kg
F41905	1662x300x1735 mm	79



Art.No	LxDxH	Kg
F41906	2869x300x1735 mm	119

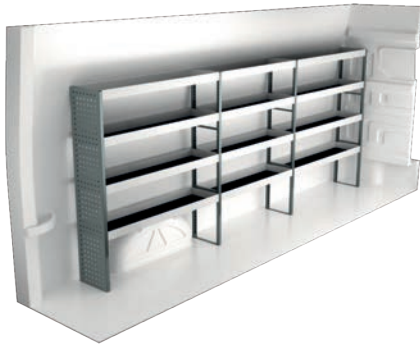


Art.No	LxDxH	Kg
F41907	1599x470x855 mm	109

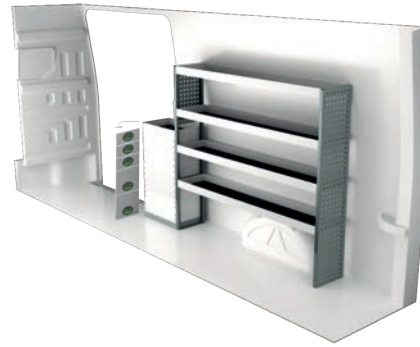
VW CRAFTER L4H3 4490 mm wheel base

For price information, mounting time and content in our van racking packages, scan the QR code on the first page.

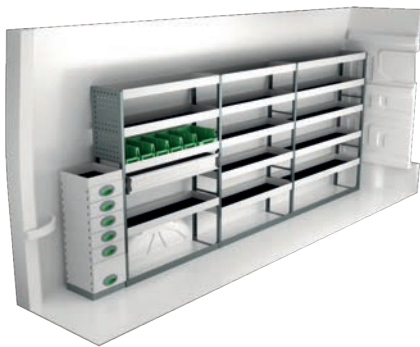
On electric and hybrid vans we recommend mounting by an experienced installer. Batteries and cable harnesses for approximately 400 volt must be taken in consideration. Cost of a floor may be added.



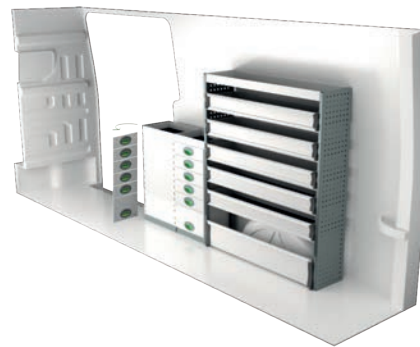
Art.No	LxDxH	Kg
F41920	3474x300x1440 mm	72



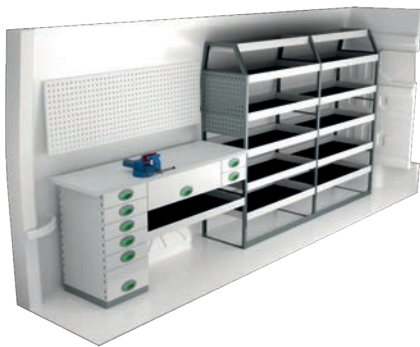
Art.No	LxDxH	Kg
F41921	2101x300x1440 mm	66



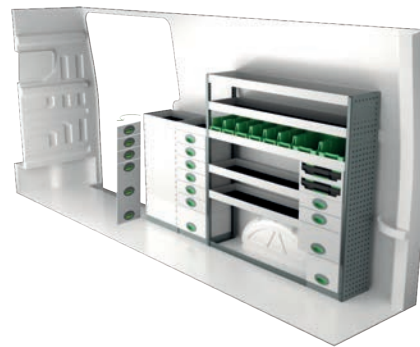
Art.No	LxDxH	Kg
F41922	3596x300x1440 mm	112



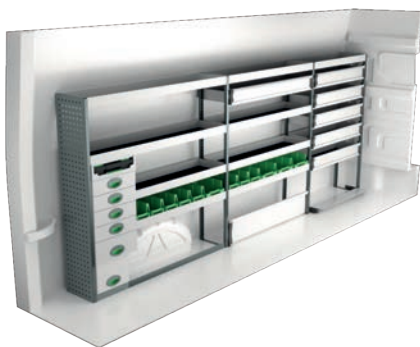
Art.No	LxDxH	Kg
F41923	2101x300x1440 mm	112



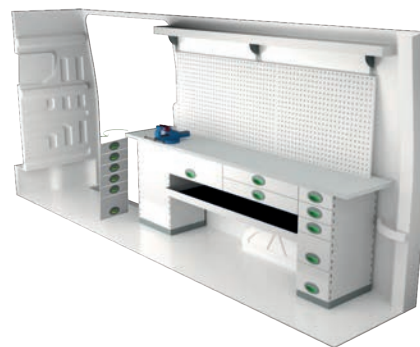
Art.No	LxDxH	Kg
F41924	3565x470x1670 mm	182



Art.No	LxDxH	Kg
F41925	2314x300x1440 mm	133



Art.No	LxDxH	Kg
F41926	3597x300x1440 mm	133

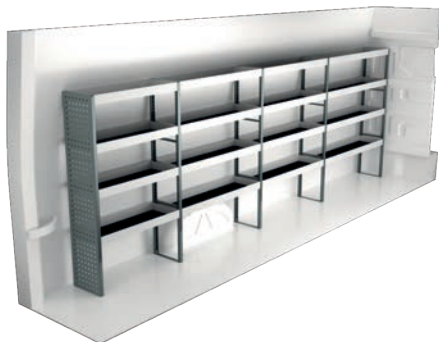


Art.No	LxDxH	Kg
F41927	2340x470x855 mm	165

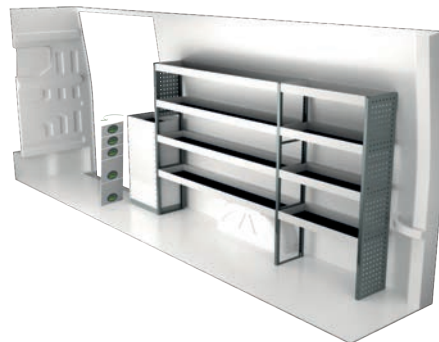
VW CRAFTER L5H3 4490 mm wheel base

For price information, mounting time and content in our van racking packages, scan the QR code on the first page.

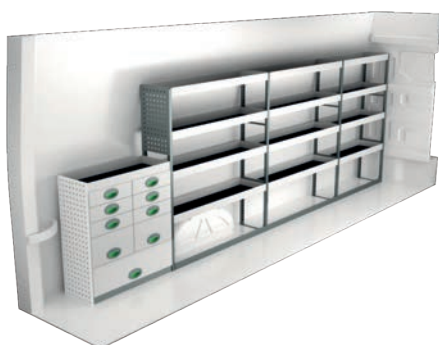
On electric and hybrid vans we recommend mounting by an experienced installer. Batteries and cable harnesses for approximately 400 volt must be taken in consideration. Cost of a floor may be added.



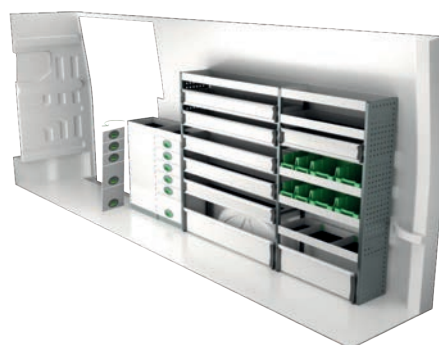
Art.No	LxDxH	Kg
F41940	4110x300x1440 mm	83



Art.No	LxDxH	Kg
F41941	2916x300x1440 mm	80



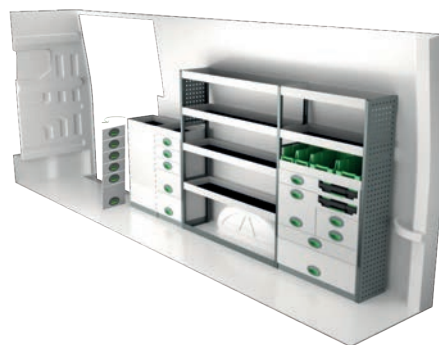
Art.No	LxDxH	Kg
F41942	4187x300x1440 mm	120



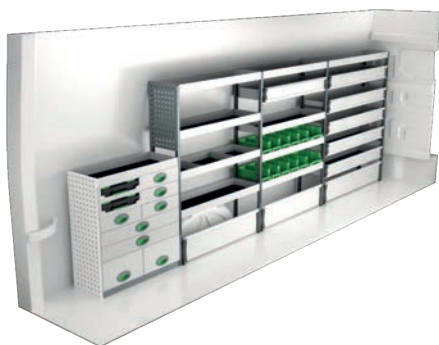
Art.No	LxDxH	Kg
F41943	2916x300x1440 mm	136



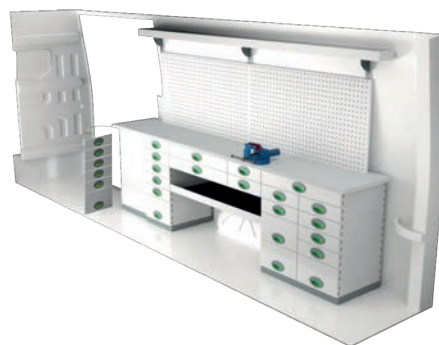
Art.No	LxDxH	Kg
F41944	4136x470x1670 mm	230



Art.No	LxDxH	Kg
F41945	2916x300x1440 mm	146



Art.No	LxDxH	Kg
F41946	4098x300x1440 mm	157

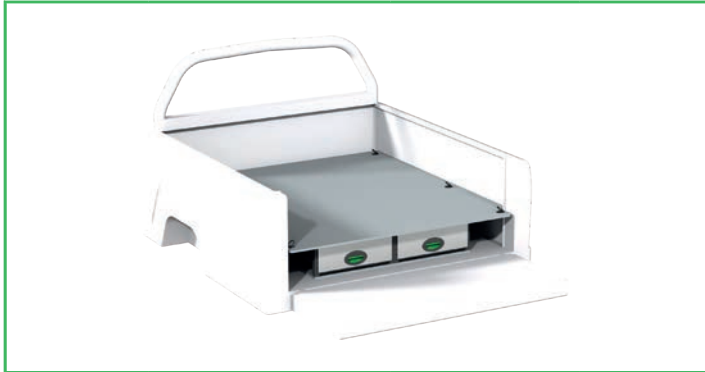


Art.No	LxDxH	Kg
F41947	2822x470x855 mm	233

VW AMAROK

For price information, mounting time and content in our van racking packages, scan the QR code on the first page.

On electric and hybrid vans we recommend mounting by an experienced installer. Batteries and cable harnesses for approximately 400 volt must be taken in consideration. Cost of a floor may be added.



Art.No	Height	Kg
F45200	214 mm	59



Art.No	Height	Kg
F45201	220 mm	57

INFORMATION



GENERALLY

The kits include what you see in the drawing as well as installation parts, rubber mats to all shelves and foam to the drawers. System Edström Bilinredningar AB is certified according to SS-EN ISO 9001:2015 to secure the administrative quality and to give us the possibility to keep a high accuracy on deliveries.

All material used in System Edström can be recycled to 100%. We are also certified according to SS-EN ISO 14001:2015.



REMEMBER

Now that you have chosen to have System Edström in your vehicle you have taken the first and most important step to make your mobile workshop safe and functional. From here on it is up to you how safe and functional your working place will be.

Remember;
You as the driver has the full responsibility if you or any one else is injured if the cargo is poorly secured. It is also your responsibility to make sure that the interior is mounted in the safest way possible whatever your choice of workshop, even if they are professionals with knowhow and long experience.

Make sure NOT to exceed the maximum payload of the vehicle.

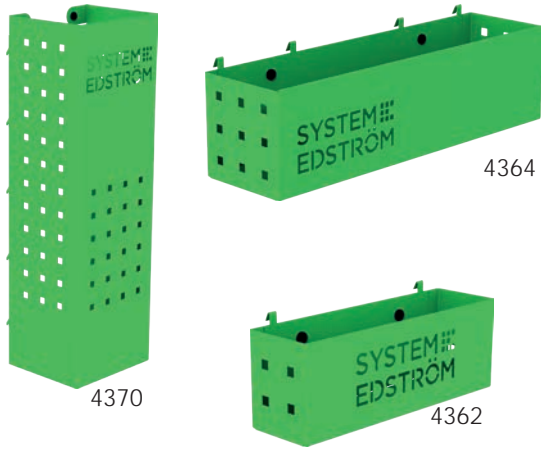


SECURITY

Our products are tested in two ways, the first and most important is two crashtests, one (ECE 17:07) performed by Milbrook in England and another one performed by Valutec in France (INRS NS286). Learn more about us on our homepage, www.systemedstrom.com.



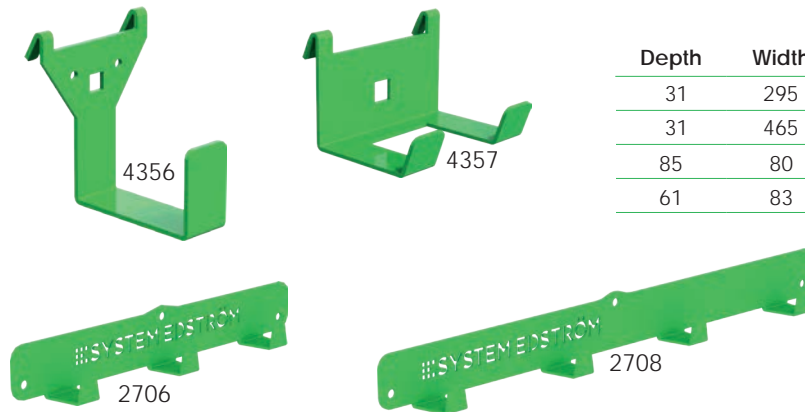
Pegboard tray



Depth	Width	Height	Kg	Part.No
82	200	80	0,5	4360
82	285	102	0,8	4362
122	455	122	1,5	4364
153	179	575	3,0	4370

A number of different trays that solve (almost) all storage problems.

Hooks



Depth	Width	Height	Kg	Part.No
31	295	40	0,3	2706
31	465	40	0,5	2708
85	80	100	0,2	4356
61	83	55	0,1	4357

Hose/Cable rack



Depth	Width	Height	Kg	Part.No
79	267	168	0,5	4077

Tube holder

66	194	123	0,4	4349
----	-----	-----	-----	------

Internal ladder holder



Length	Kg	Part.No
2400	5,5	T8900

Store your ladder on the inside of the roof, pull it back to the rear door in a simple operation. The aluminum rail comes in two parts with a joining piece.

Plastic bin for shelves

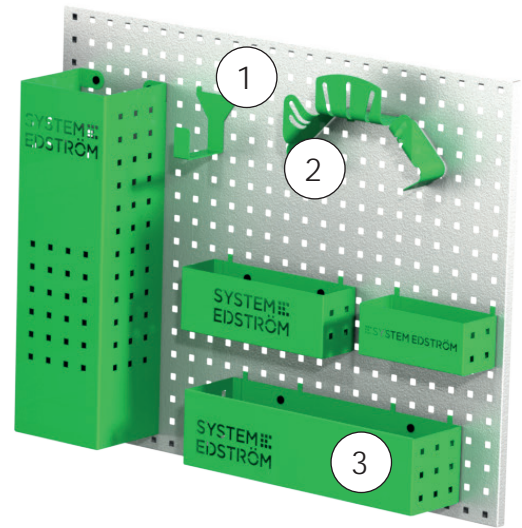
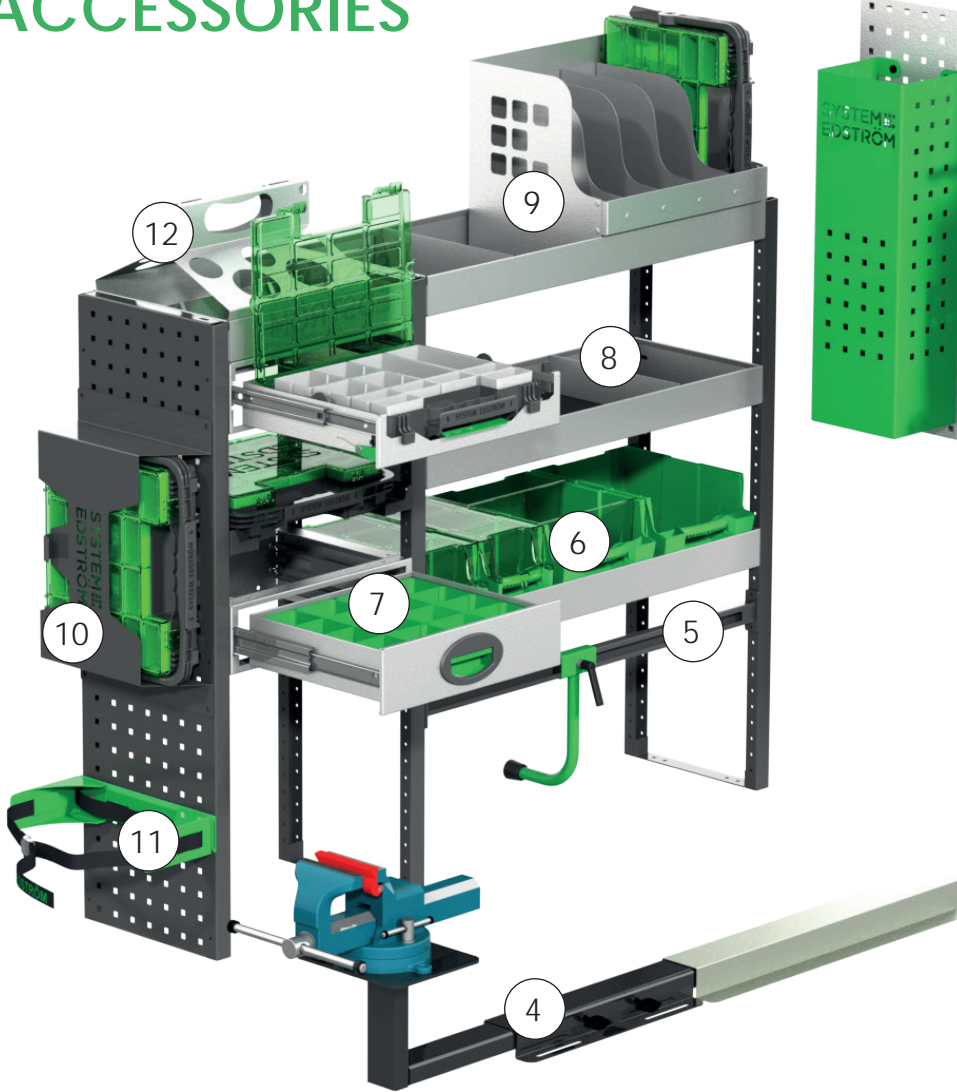


Depth	Width	Height	Kg	Part.No
300	145	154	0,4	3050
300	235	154	0,5	3052
470	145	154	0,5	3055
470	235	154	0,5	3057

Drawer inserts

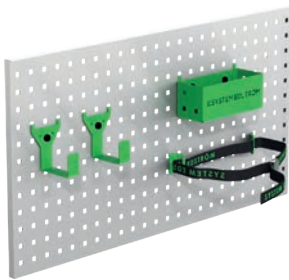
Depth	Width	Height	Kg	Part.No
300	127	70	0,2	3001
300	172	70	0,3	3003
470	127	70	0,4	3005
470	172	70	0,4	3007

ACCESSORIES



Pos.	Description
1	Universal hook
2	Cable/Hose rack
3	Pegboard basket
4	Vice and holders
5	Case support
6	Plastic bins
7	Drawer inserts
8	Shelf dividers
9	Tool case/File holder
10	Tool case
11	Gas bottle holders
12	Can/Tube holder

Accessory package No. 1

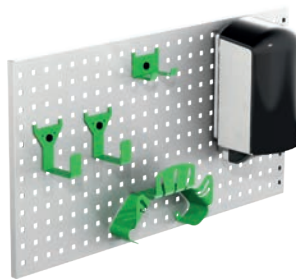


Art.No

F11001

Pegboard not included.

Accessory package No. 2

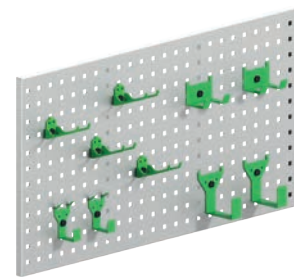


Art.No

F11002

Pegboard not included.

Accessory package No. 3



Art.No

F11004

Pegboard not included.



Up to 5 years
warranty



Crash tested



Made in Sweden

www.systemedstrom.com

**SYSTEM
EDSTRÖM**

SYSTEM EDSTRÖM BILINREDNINGAR AB
Raseborgsgatan 11
164 74 Kista
Sweden

CONTACT

Order +46 (0)10 102 95 00

Sales +46 (0)10 102 95 01

Switchboard +46 (0)8 590 920 20

info@edstrom.se